

Case Study



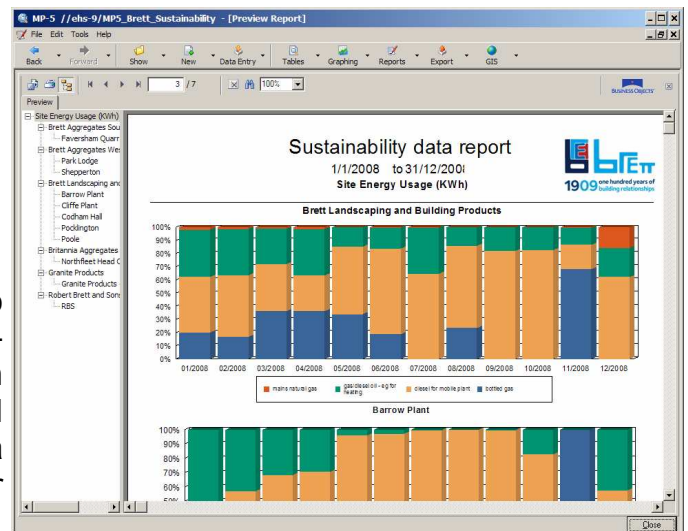
Brett Aggregates use MP-5 for environmental data and sustainability reporting

The Brett Group (<http://www.brett.co.uk/>) was established in the UK in 1909. Since that time Brett has evolved into a successful, established construction and building materials group - one of the largest independents in the UK. The business is structured into a number of divisions each being aligned with a product set – aggregates, concrete, construction, granite products, marine aggregates, landscaping and building products, and landfill and waste.

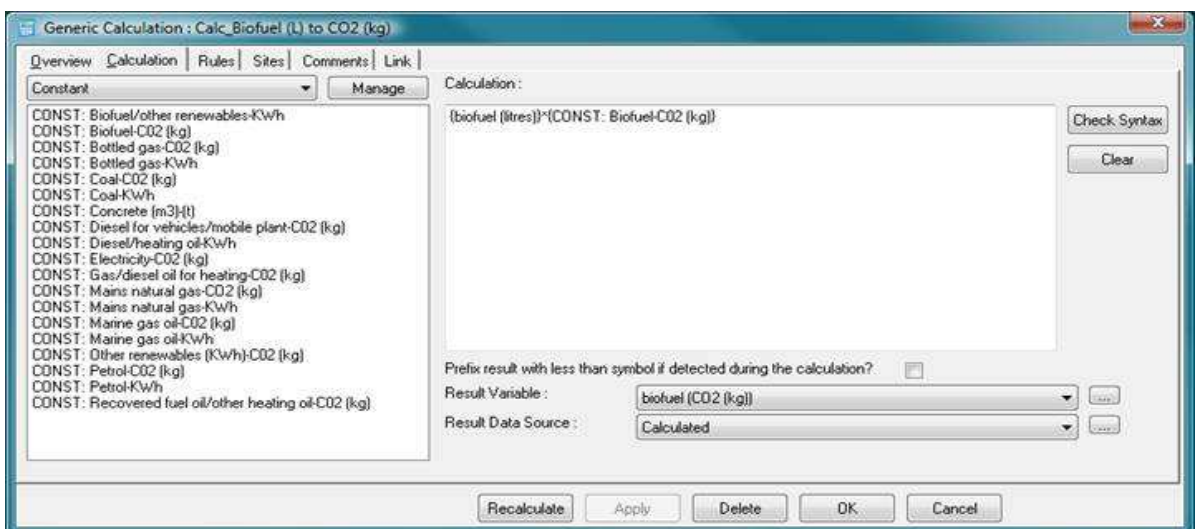
Having used Monitor-Pro for seven years to manage their landfill monitoring data, the Brett Group have worked with EHS Data on a database to manage their CSR data. The system mimics closely their business structure which of course ties in to the locations at which data arises and allows them to consider data at site level, business unit level, regionally and corporately. In total the system manages sustainability data from over 80 sites across 9 businesses. It makes full use of MP-5's flexibility, and handles these types of data:

- Community and Customer Relations
- Developing people
- Land Management and biodiversity
- Regulation
- Site energy and water usage
- Transport energy
- Waste

Imported data is automatically calculated to produce useful KPI's, for example conversions from different energy sources to KWh and Kg carbon. These are also aggregated per site and calculated with production data to provide water, waste and energy use per tonne of product



Data entry is based on the standard Brett spreadsheet template. The MP-5 monitoring scheduler will alert site staff when their data is due for submittal, and also alerts if/when it has not been sent.



Custom benchmarking reports have been provided that display the KPI's and other data.